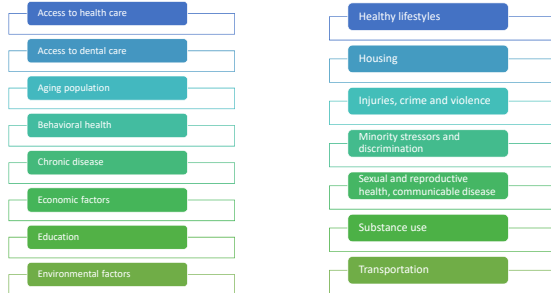


Cabarrus County 2020 Community Needs Assessment Health Priorities



Coalition and Action Plan Support 2016-2019

Substance Use	\$1.35 million
Mental Health	\$577,000
Childhood Obesity	\$1.17 million



Cabarrus County 2020 Community Needs Assessment Key Informant Analysis



111
Key informant respondents

82% of respondents
Live in Cabarrus County

66.3% of respondents
Have worked in Cabarrus County for more than 10 years.

Key Informant Demographics

48.0% of respondents identified as female

Racial Breakdown of Key Informants

White (74%)
Black or African American (9%)
Latino or Hispanic (8%)
Asian or Pacific Islander (5%)
Other (3%)

Most respondents (82%) reported that they lived in the county.

Some respondents reported that their area of work was best described as:

Local Government (20%)
Faith Community (19%)
Business (16%)
Healthcare (12%)
Human services (11%)

Most respondents (97%) reported that they worked in Cabarrus County



QUALITY OF LIFE ISSUES

These questions gathered whether respondents agreed or disagreed with quality of life statements.

QUALITY OF LIFE



RAISING CHILDREN & AGING

100% felt it was a good place to raise children

100% felt it was a good place to age



SUPPORT & HELP

47.7% felt that there wasn't enough support and help to individuals and families during times of crisis (43.2% disagree, 4.5% strongly disagree)



QUALITY OF LIFE

98.2% felt that Cabarrus County offered a good quality of life for all ages



ECONOMIC OPPORTUNITY

21.1% felt that there wasn't enough economic opportunity (20.2% disagree, 0.9% strongly disagree)



RECREATIONAL OPPORTUNITIES

91.9% felt it offered recreational opportunities for all ages



HEALTHCARE

91.7% felt there was a good healthcare system



SOCIAL & ECONOMIC ISSUES

SOCIAL AND ECONOMIC ISSUES



EDUCATION

45% rated **quality of education** a somewhat significant issue
43% rated **graduation rates and illiteracy** a very significant issue



CHILD CARE SERVICES

61% rated **affordability** a very significant issue
54% rated **quality** a very significant issue
44% rated **availability** a very significant issue



AGING SERVICES

66% rated **financial services** as a very significant issues
42% rated **specialized services** a somewhat significant issue
44% rated **physical, wellness and social activities** a somewhat significant issue
39% rated **daily in-home services** as a very significant issue

SOCIAL AND ECONOMIC ISSUES



NEGLECT OR ABUSE

46% rated **domestic violence** a very significant issue
41% rated **sexual violence** a very significant issue
40% rated **child neglect or abuse** a very significant issue
35% rated **elder neglect/abuse** a somewhat significant issue



SOCIAL DISPARITIES

81% rated **racism** a somewhat or very significant issue
53% rated **health** a very significant issue
50% rated **employment** a very significant issue
46% rated **education** a very significant issue

HEALTH RELATED ISSUES

HEALTH RELATED ISSUES



HEALTH BEHAVIORS

68% rated **tobacco, alcohol or drugs** as a very significant issue
64% rated **obesity** as a very significant issue
37% rated **unintended pregnancy** as a very significant or somewhat significant issue



MENTAL HEALTH SERVICES

76% rated **access to mental health** as a very significant issue
72% rated **affordability** as a very significant issue
56% rated **quality** as a very significant issue



HEALTHY FOOD

61% rated **affordability of healthy food** as a very significant issue
52% rated **availability** as a very significant issue
46% rated **quality of healthy food** availability as a very significant issue

HEALTH RELATED ISSUES



CLINICAL HEALTH SERVICES

62% rated **affordability** as a very significant issue
47% rated **access of clinical health services** as a very significant issue
39% rated **quality** as a very significant issue



DENTAL SERVICES

57% rated **affordability** as a very significant issue
41% rated **access of dental services** as a very significant issue
36% rated **quality** as a somewhat significant issue



PHYSICAL ENVIRONMENT ISSUES

PHYSICAL ENVIRONMENT ISSUES



HOUSING

63% rated **affordability of housing** as a significant issue
60% rated **homelessness** as a very significant issue
53% rated **substandard housing** as a very significant issue



TRANSPORTATION

53% rated **public transportation options** as a very significant issue
51% rated **long commute (over 30 min)** as a somewhat significant issue



COMMUNITY SAFETY

43% rated **neighborhood safety** as a very significant issue
32% rated **violent crime** (assault, rape, murder) as a very significant issue

PHYSICAL ENVIRONMENT ISSUES



RECREATIONAL

42% rated **quality of recreational opportunities** as a somewhat significant community issue
34% rated **access to recreational opportunities** as a somewhat significant community issue



ENVIRONMENT

47% rated **pollution (air, water, land)** as a somewhat significant issue
38% rated **natural disaster preparedness** as a somewhat significant issue
51% rated **road maintenance** as a somewhat significant issue

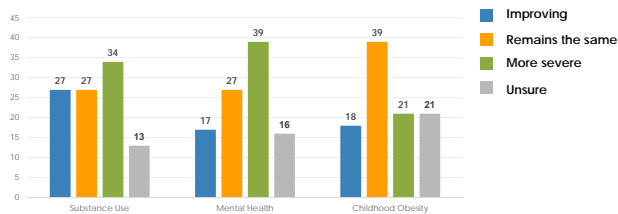
ALL ISSUES AGGREGATED

TOP 15 MOST SIGNIFICANT ISSUES

- | | |
|--|---|
| 1. Affordability of Housing 94% | 10. Quality of Education 89% |
| 2. Substandard Housing 94% | 11. Access of mental health services 88% |
| 3. Affordability of clinical health services 92% | 12. Tobacco, alcohol and drug use 88% |
| 4. Obesity 92% | 13. Affordability of dental health services 88% |
| 5. Affordability of healthy food 91% | 14. Homelessness 88% |
| 6. Affordability of mental health services 91% | 15. Long commute (over 30 min) 88% |
| 7. Education 90% | |
| 8. Health 90% | |
| 9. Employment 90% | |

Key Informant Survey

Do you think that progress from the following 2016 priority issues are improving, remained the same, OR grown more severe?



Key Informant Survey

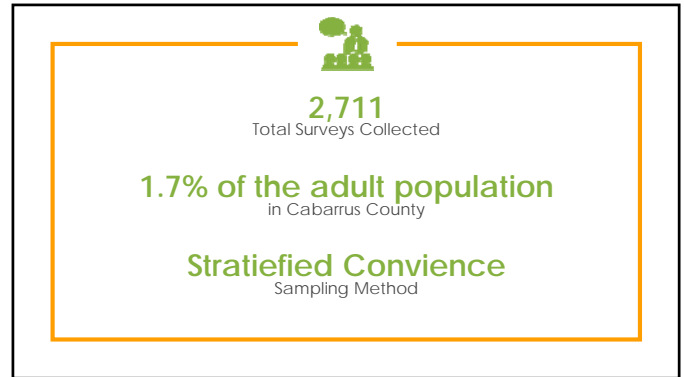
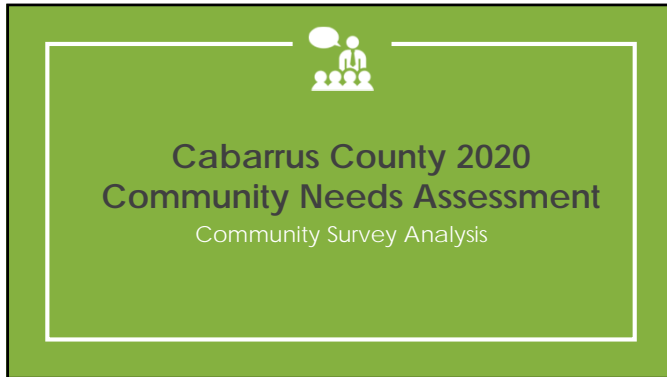
Most common way you have seen the results from the 2016 Community Needs Assessment being utilized?

Approximately half of respondents reported the findings have been used for:

- Program Planning (27%)
- Advocacy Initiatives (17%)
- Strategic Planning (14%)

Approximately one-tenth of respondents reported the findings have been used for:

- Public Policy Initiatives (11%)
- Budget allocation decisions (9%)



Methodology

General Population: In 2018, Cabarrus County's 211,342 residents
Sampling Frame: Cabarrus County's adult residents → 157,125 residents
Sampling Methods: Stratified convenience sample
Survey Mode: The survey was available to the public for three months (December 4, 2019 – March 4, 2020). Cabarrus Health Alliance staff along with community partners distributed surveys through email listservs, social media, organizations, events, and at different locations. Surveys were available in both English and Spanish, as well as online and by paper. Surveys were self-administered and anonymous.
Sample Size: Collected 2,944 surveys, however, 233 respondent did not fit the eligibility criteria of being a resident of Cabarrus County. The Community Planning Council successfully sampled 1.7% (n= 2,711) of the adult population (n=157,125).
Confidence Level & Margin of Error: 95% +/- 2%

DEMOGRAPHICS OF RESPONDENTS

GENDER	2018 CENSUS ESTIMATES AMONG CABARRUS ADULT POPULATION	2020 SURVEY RESPONDENTS	SD + / - %
Female	52.5%	75.6%	+ 23.1%
Male	47.5%	24.4%	- 23.1%

RACE / ETHNICITY	2018 CENSUS ESTIMATES AMONG CABARRUS ADULT POPULATION	2020 SURVEY RESPONDENTS	SD + / - %
White	63.9%	62.6%	- 1.3%
African American	18.4%	17.4%	- 1.0%
Latino or Hispanic	10.8%	14.7%	+ 3.9%
Asian or Pacific Islander	4.10%	2.0%	- 2.1%

GROSS HOUSEHOLD INCOME	2018 CENSUS ESTIMATES AMONG CABARRUS ADULT POPULATION	2020 SURVEY RESPONDENTS	SD + / - %
Less than \$9,999	4.40%	8%	+ 3.6%
\$10,000 to \$14,999	4.00%	7%	+ 3.0%
\$15,000 to \$24,999	8.10%	8%	- 0.1%
\$25,000 to \$34,999	9.80%	8%	- 1.8%
\$35,000 to \$54,999	13.90%	13%	- 0.9%
\$55,000 to \$74,999	19.60%	10%	- 9.6%
\$75,000 to \$99,999	14.20%	11%	- 3.2%
\$100,000 to \$149,999	14.90%	13%	- 1.9%
More than \$150,000	11.20%	9%	- 2.2%

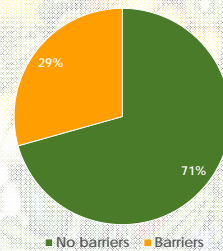
DEMOGRAPHICS OF RESPONDENTS

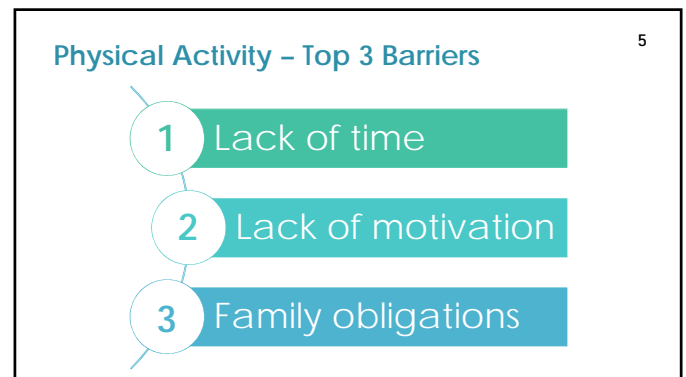
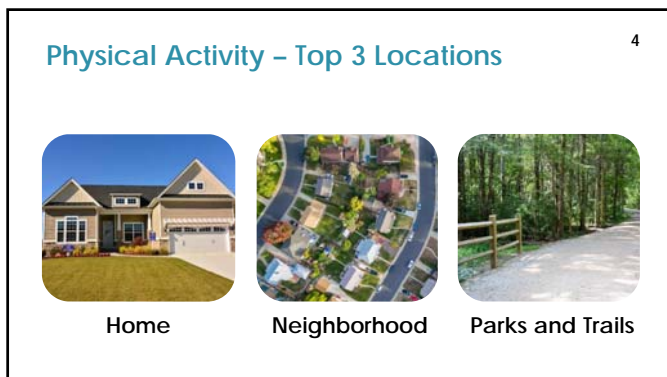
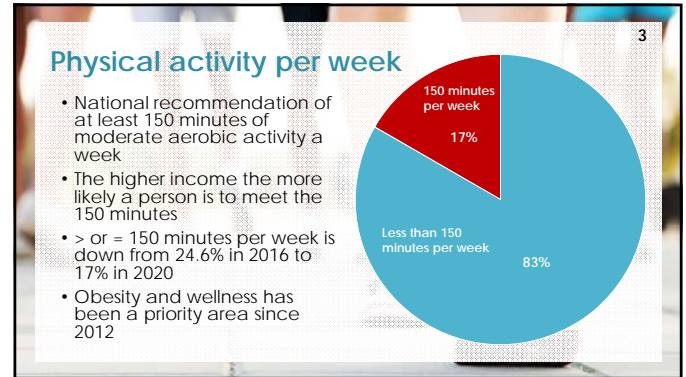
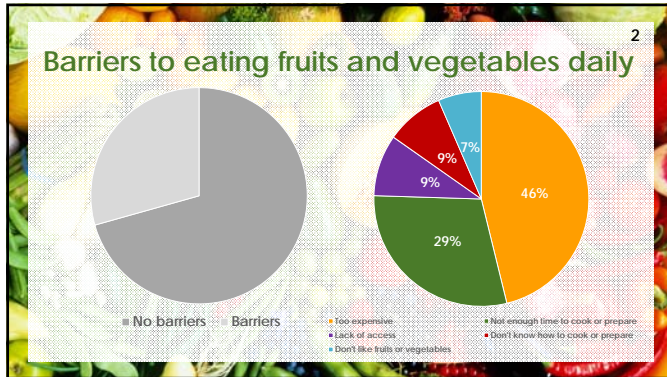
ZIP CODE	2013-2017 CENSUS ESTIMATES (Goal)	2020 SURVEY RESPONDENTS	DIFFERENCE
28081 & 28083 Kannapolis	458	482	+24
28025 & 28027 Concord	1013	1075	+62
28124 Mount Pleasant	59	48	-11
28075 Harrisburg	153	159	+6
28107 Midland	71	41	-30

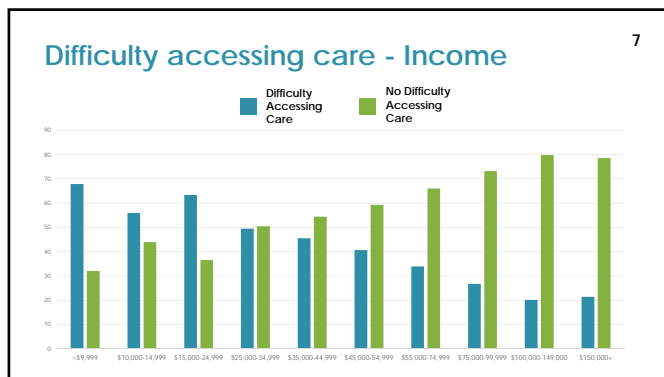
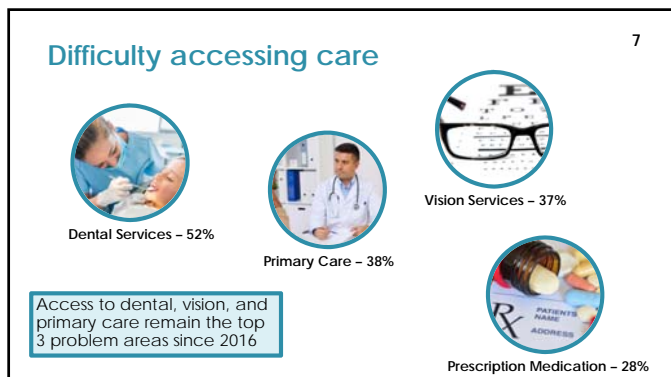
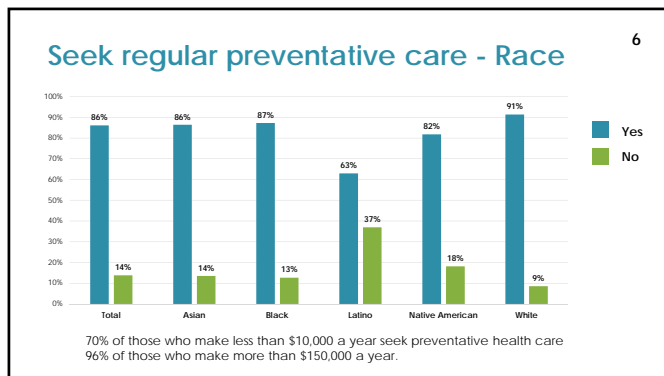


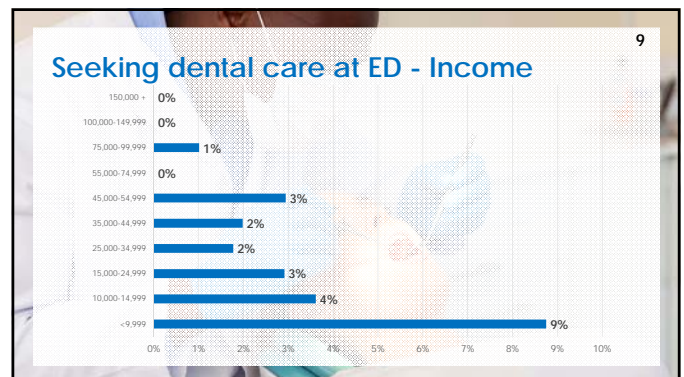
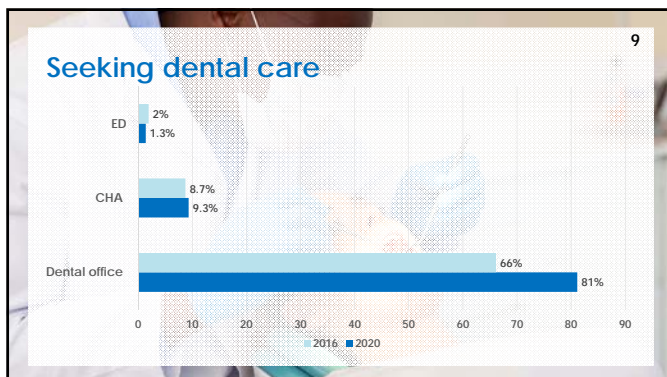
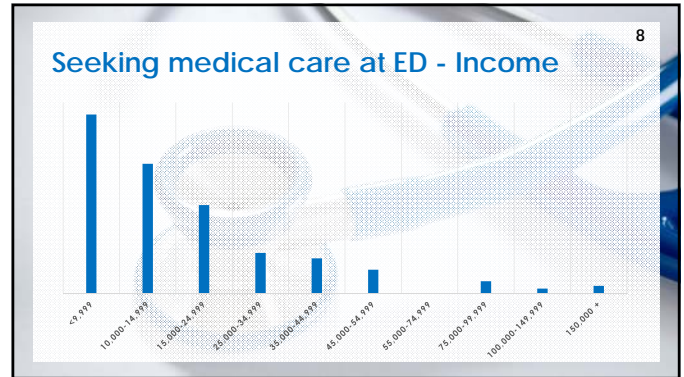
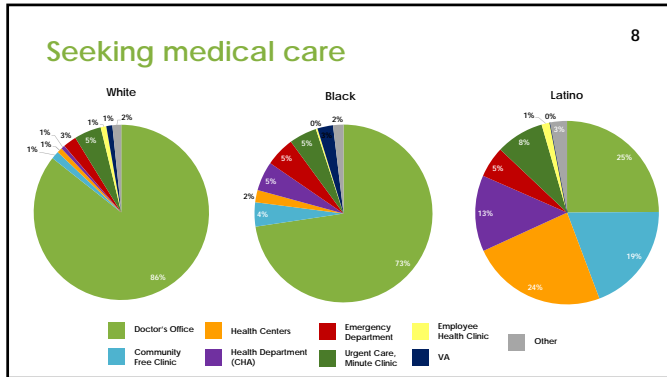
Health Behaviors

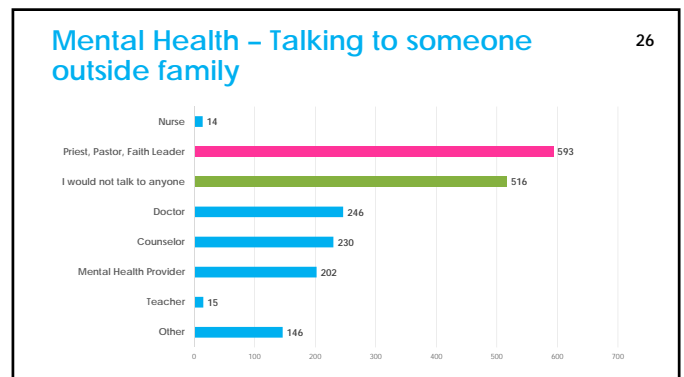
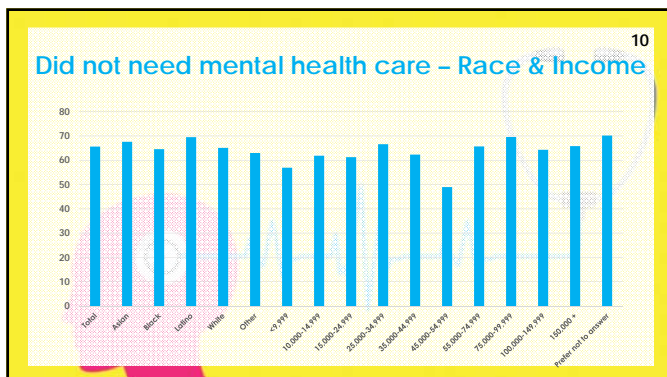
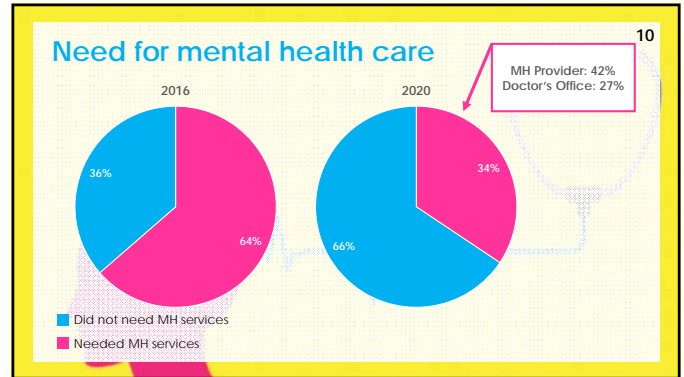
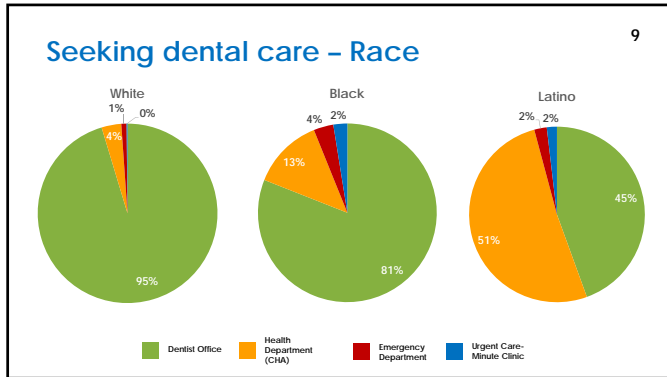
Barriers to eating fruits and vegetables daily ²





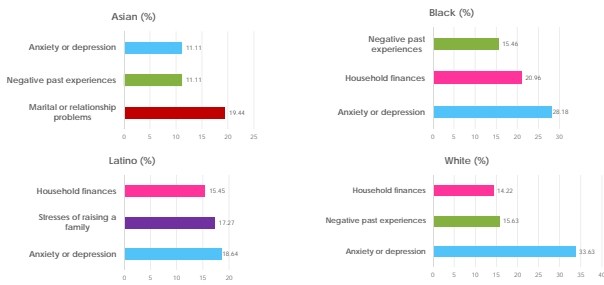






Mental Health – Top 3 Reasons

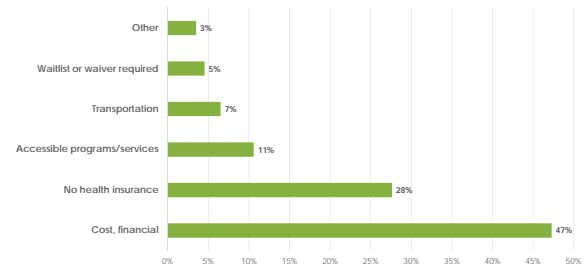
27



Barriers to healthcare services

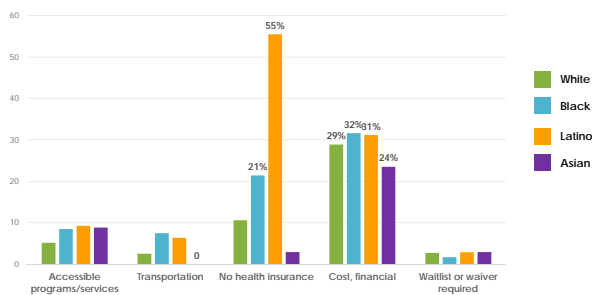
 Reported Barriers – 44%
 No barriers – 56%

11



Barriers to healthcare services - Race

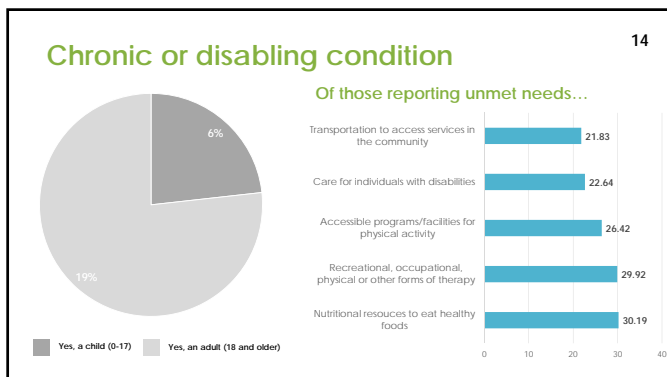
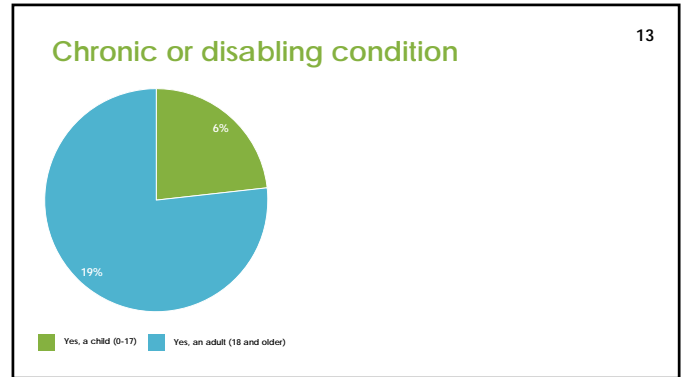
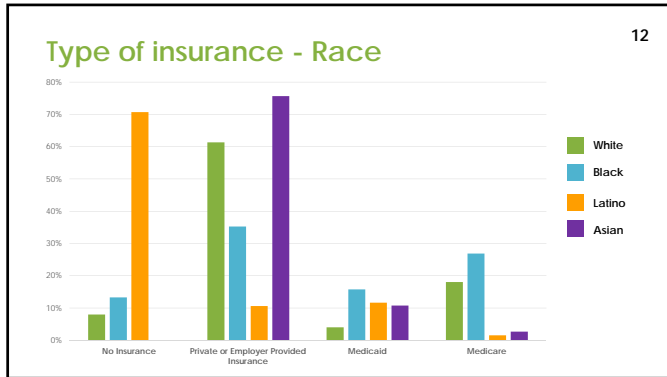
11

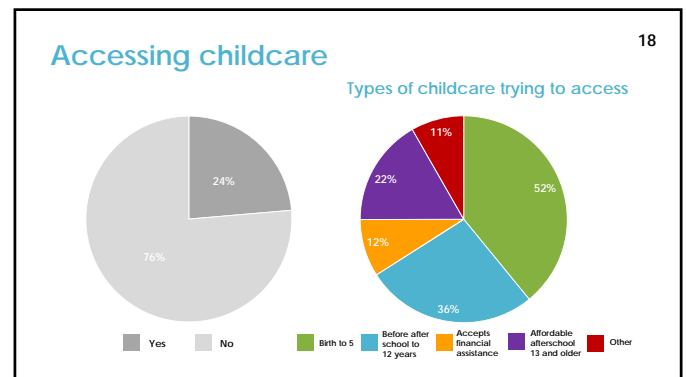
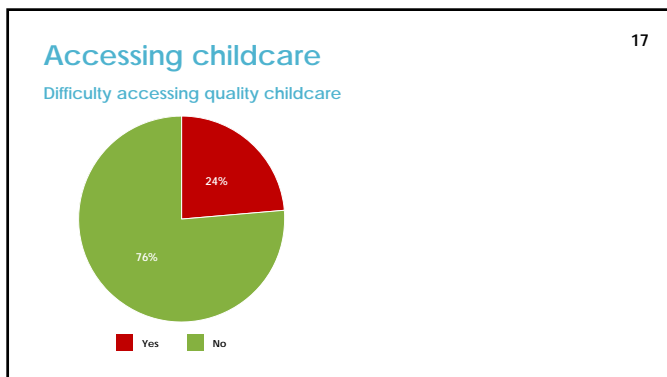


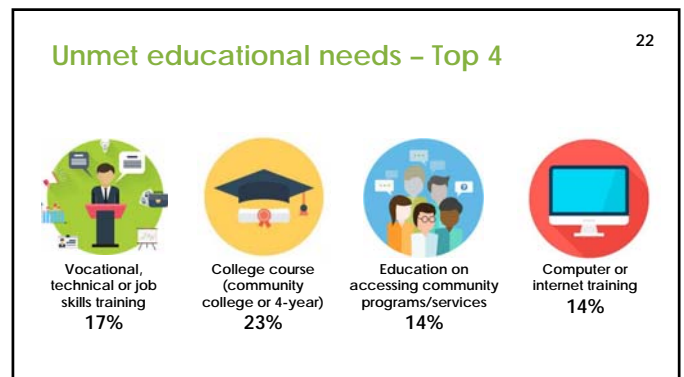
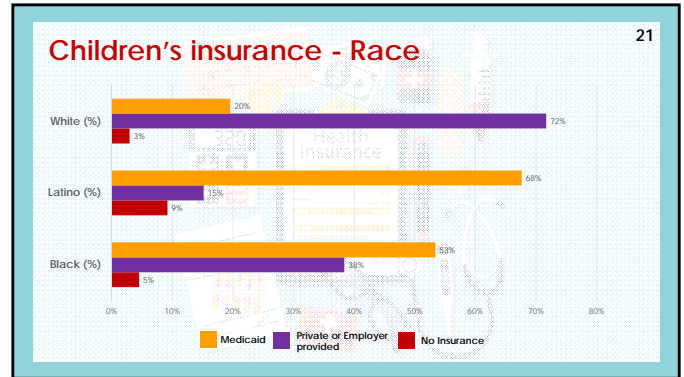
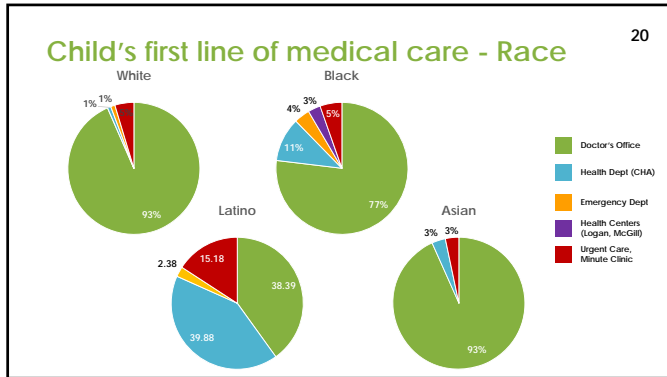
Type of insurance – 2016 vs 2020

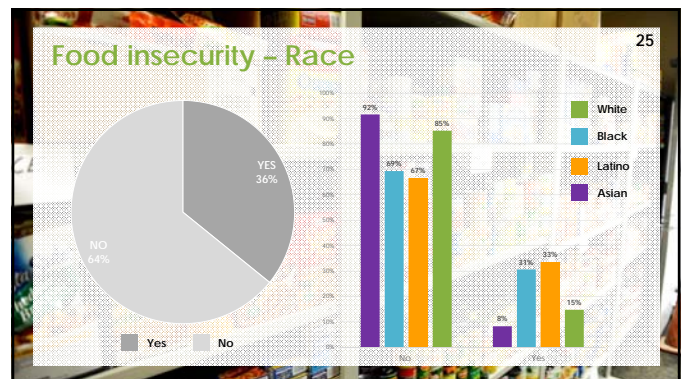
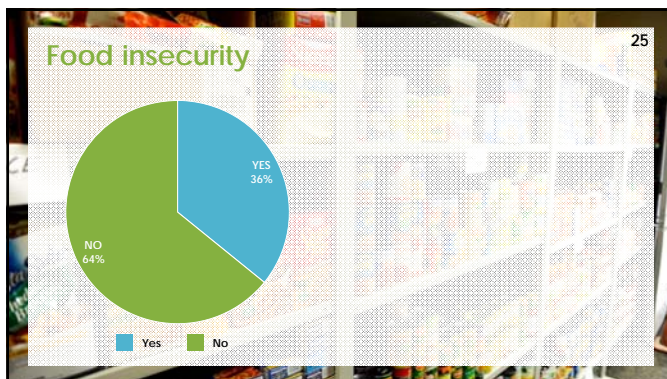
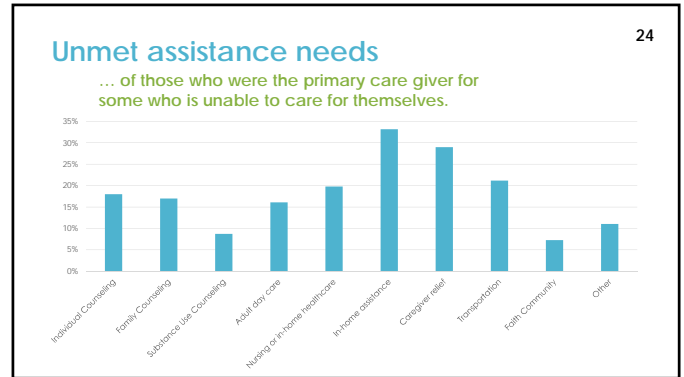
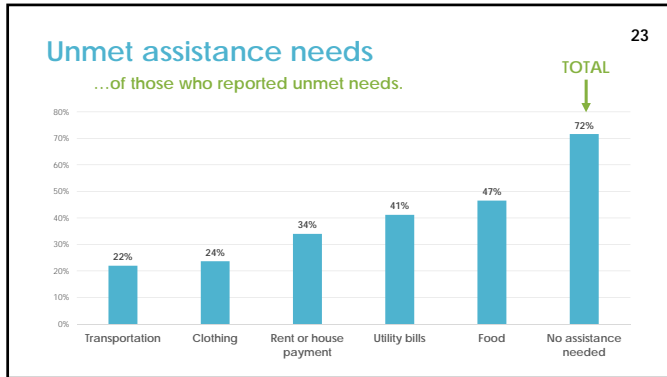
12

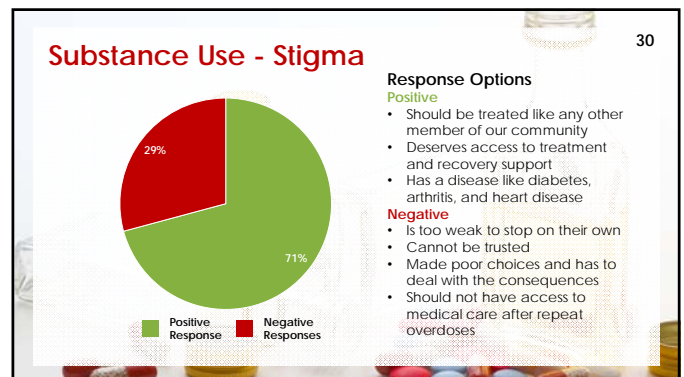
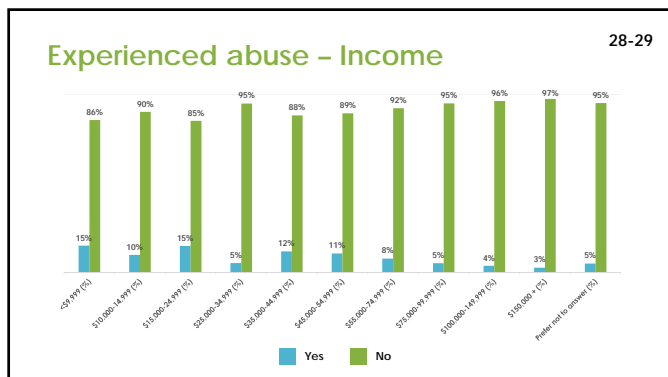
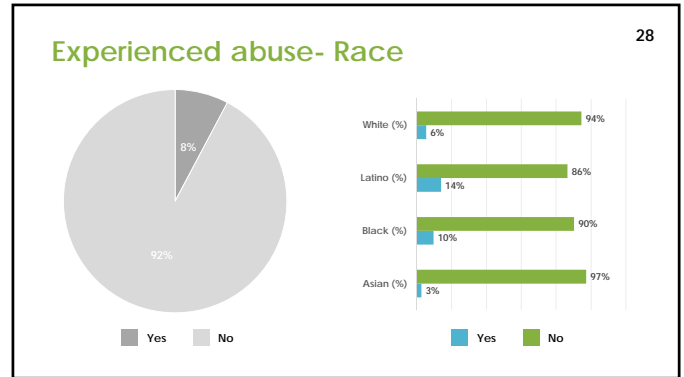
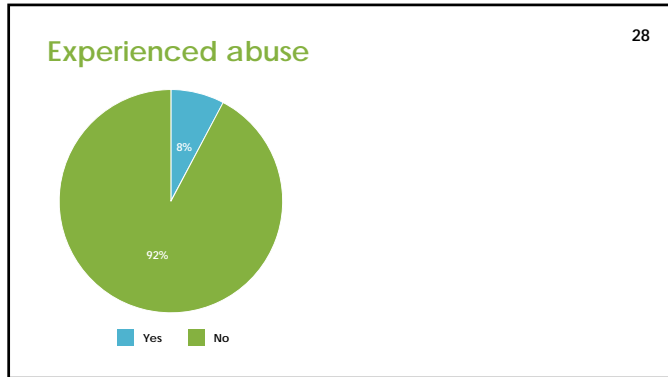
	2016	2020
No insurance	25 %	16 %
Private or employer provided insurance	41 %	52 %
Medicaid	20 %	7 %
Medicare	15 %	16 %
NC Health Choice	1 %	2 %
TriCare	2 %	2 %
HealthNet	N/A	<1 %
ACA Marketplace	2 %	2 %
Other	<1 %	2 %





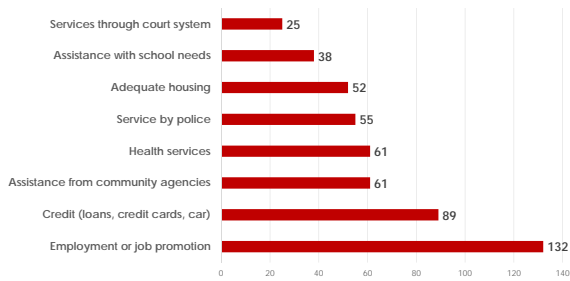






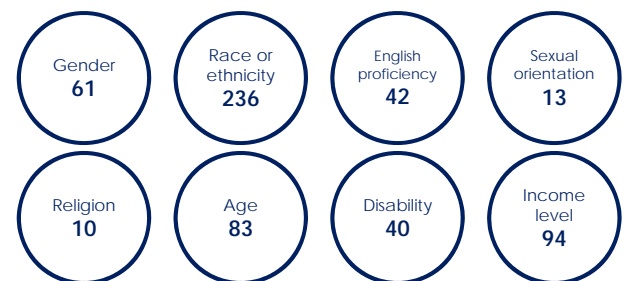
Experiences of discrimination

31



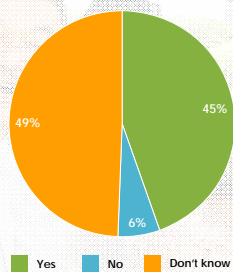
Discrimination based on...

32



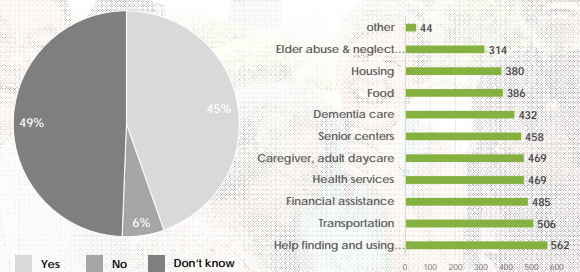
Senior Services

33



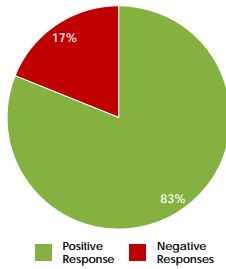
Senior Services needs

34



35

Community connectedness



Response Options

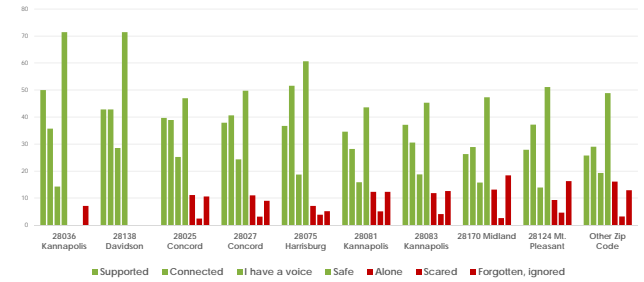
Positive

- Supported
- Connected
- I have a voice
- Safe

Negative

- Alone
- Scared
- Forgotten, ignored
- Other

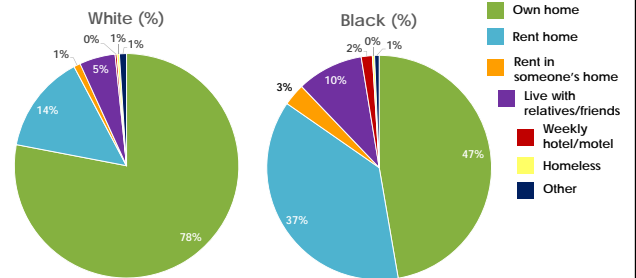
Community connectedness – Zip Code

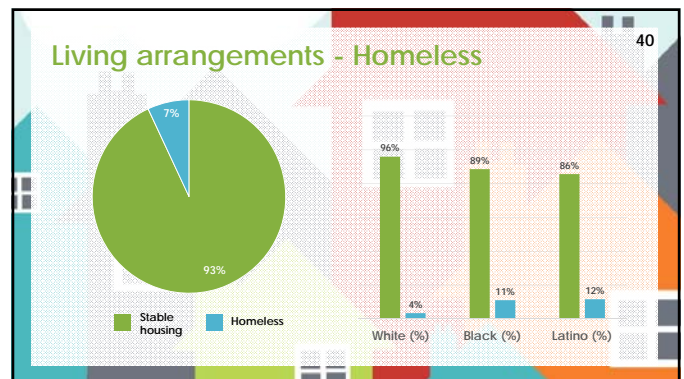
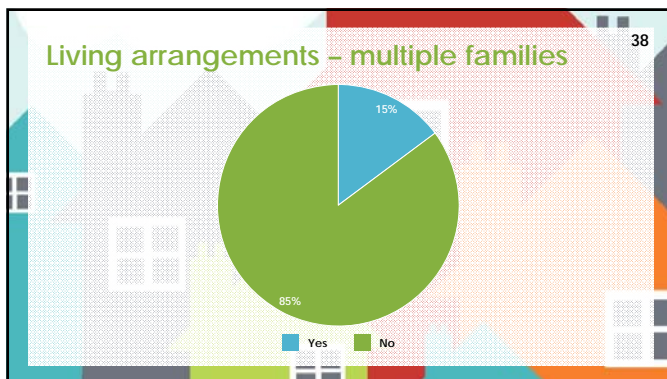
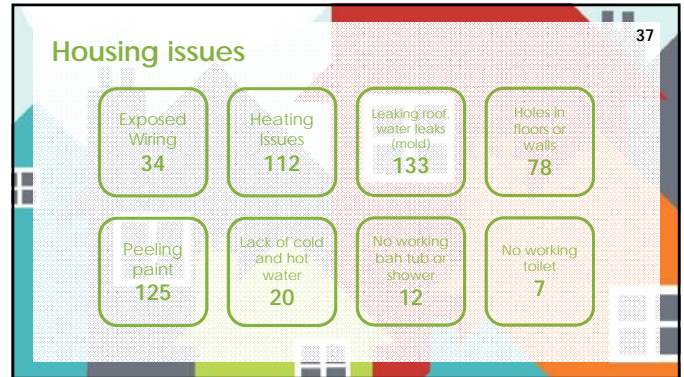
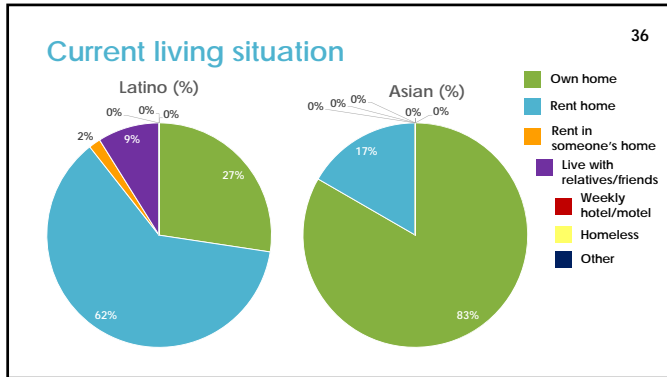


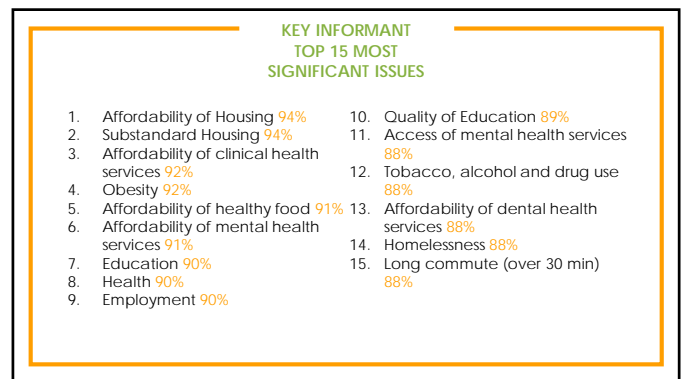
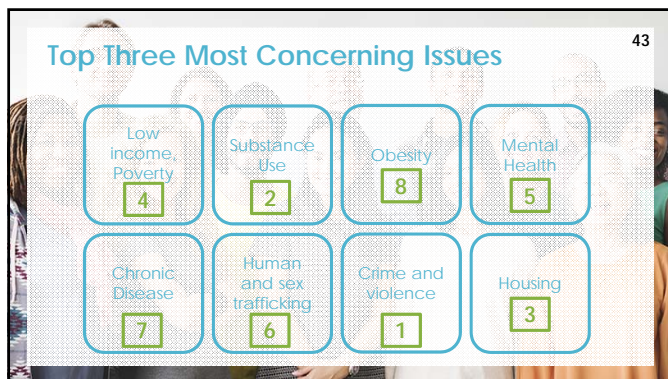
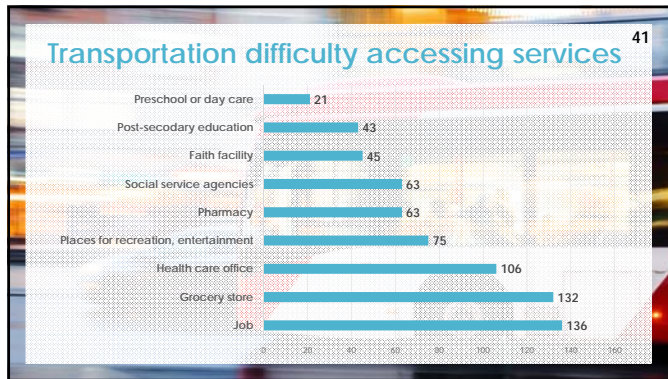
Physical Environment

Current living situation

36







Focus Groups – Top Priorities by Subgroup

Employment

- 1) Crime and Violence Prevention
- 2) Housing
- 3) Mental Health

Older Adults

- 1) Crime and Violence Prevention
- 2) Housing
- 3) Mental Health

Faith Leaders

- 1) Food Insecurity
- 2) Housing
- 3) Mental Health, Substance Use (tied)

Individuals w/ Disabilities

- 1) Disability and Health
- 2) Mental Health
- 3) Housing, Crime and Violence Prevention (tied)

Focus Groups – Top Priorities by Subgroup

Single, Teen Parent

- 1) Housing
- 2) Mental Health
- 3) Sexually Transmitted Diseases

Latino

- 1) Mental Health
- 2) Substance Use, Chronic Disease, Obesity

Youth

- 1) Crime and Violence Prevention
- 2) Mental Health
- 3) Substance Use

Housing Insecure

- 1) Housing
- 2) Mental Health
- 3) Food Insecurity, Substance Use (tied)

Focus Groups – Top Priorities, Cumulative



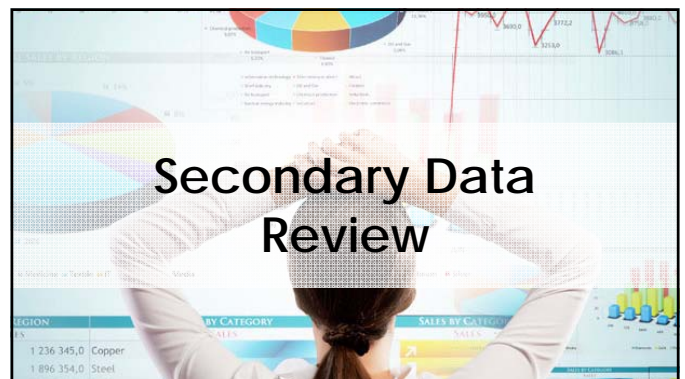
Housing



Mental Health



Crime and Prevention



MAGNITUDE

How many community members does this issue impact, either actually or potentially?

SERIOUSNESS OF CONSEQUENCE

How big are the consequences, if we do not fix the issue now?

What degree of disability or premature death occurs because of this issue?

What are the potential economic or social burdens to Cabarrus County?

FEASIBILITY

How likely is it that we can fix the health issue based on what people's views, resources, and if the health issue is preventable?
Is the problem politically and socially acceptable?
Is Cabarrus County ready for this to be a priority?

Priority Voting

Cabarrus County 2020 Community Needs Assessment Health Priorities

Access to health care	Healthy lifestyles
Access to dental care	Housing
Aging population	Injuries, crime and violence
Behavioral health	Minority stressors and discrimination
Chronic disease	Sexual and reproductive health, communicable disease
Economic factors	Substance use
Education	Transportation
Environmental factors	

Thank you!

